




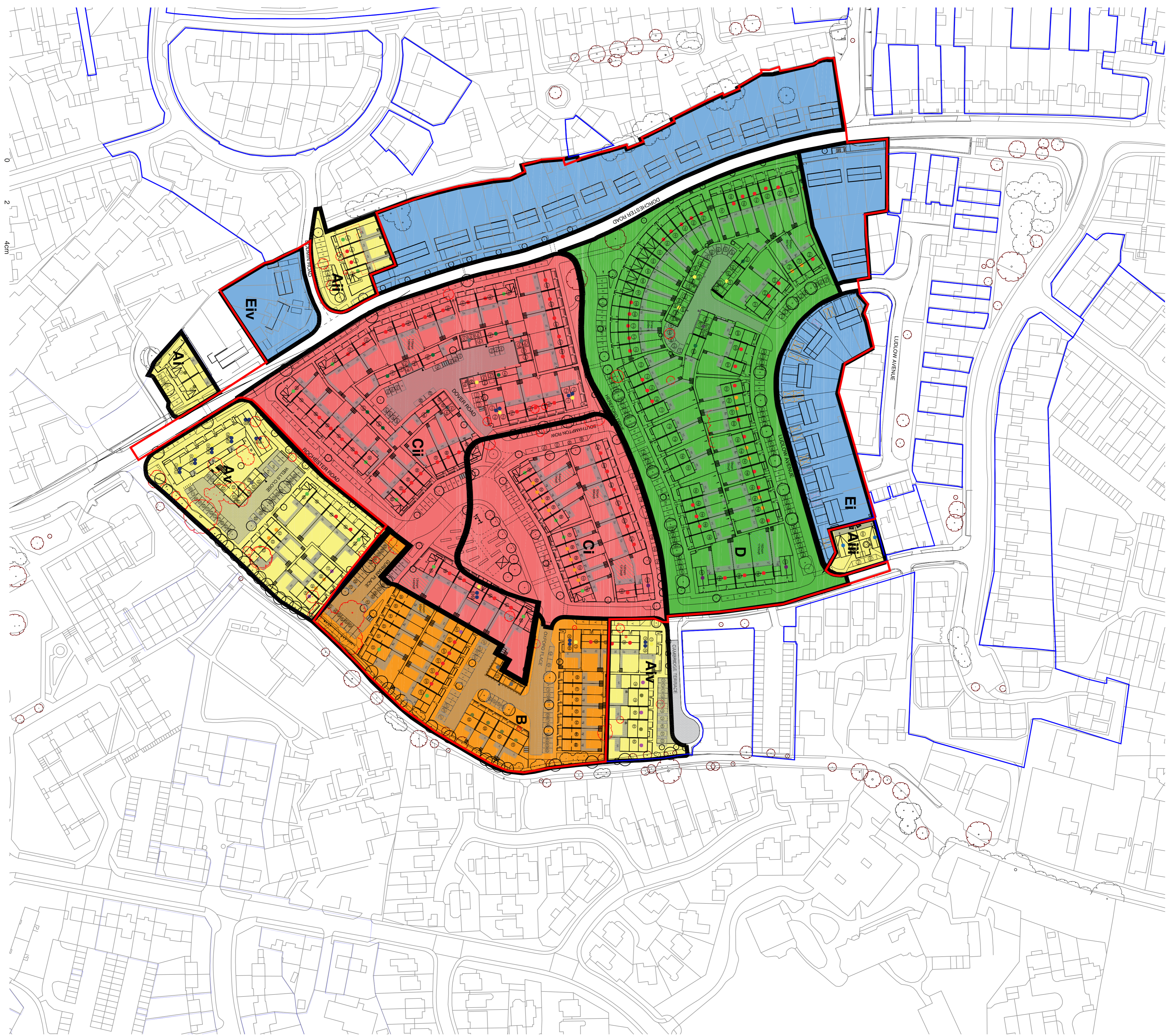


Total	New Homes
8	1B Flats over Garages
2	1B Bungalow
22	1B Flat
14	2B Flat
8	2B Bungalow
9	2B Chalet
32	2B House
86	3B House
6	3B Chalet
36	4B House
3	5B House
226	New Homes Sub-Total
50	Existing Homes
276	Grand Total

 Potential Refuse Collection Point

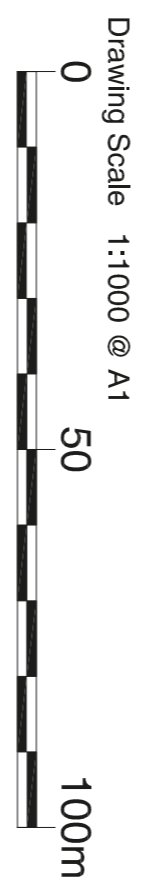
-  Phase A
-  Phase B
-  Phase C
-  Phase D
-  Phase E



Responsibility is not accepted for errors made by others in scaling from this drawing. Contractors must check all dimensions on site. Discrepancies must be reported immediately to the architect before proceeding. This drawing is copyright ©2018 Nash Partnership. All rights reserved.

Rev.	Date	Notes	Rev.
A	18.11.18	Draw Application Issue	LM
B	18.11.18	Planning Issue	LM
C	12.12.18	Highways Update	LM
D	06.03.19	Highways Update	LM
E	01.06.20	Planning Name Update	LM

CDM Regulations  
xxx



**nash**  
partnership

Bath : 01225 442424 | 23a Sydney Buildings, Bath, BA2 6BZ  
 Bristol : 0117 3527560 | 25 King Street, Bristol, BS1 4PB  
 www.nashpartnership.com  
 mail@nashpartnership.com

**PLANNING**

Job Number	Drawing Number	Revision
17025	L011	E

Project  
North Taunton Woolway Project

Title  
Illustrative Phase Plan

Drawn by	Project Manager
LM	AT

Scale	Date created
1:1000 @ A1	06.11.18

